

New
FPD 8010E



Pressure Distribution Mapping System for FPD-8010E

► Easy to understand Prescale Pressure Analysis Software is now available!

FPD-8010 provides a wide range of effective presentation and report functions utilizing FPD-8010E software and a scanner to digitize Prescale outputs to allow the user to produce multi-faceted measurement data such as pressure distribution and enlargement, cross sectional distribution, and 3-D image display. This serves to accelerate product development and improved yields based on detailed multi-faceted measurement data and analysis.

► System Configuration

Dedicated Software



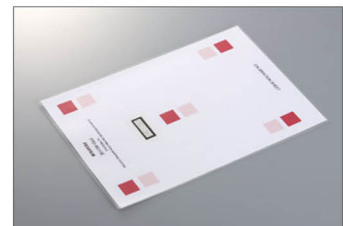
Converts Prescale density into pressure values.

Epson Perfection Scanner



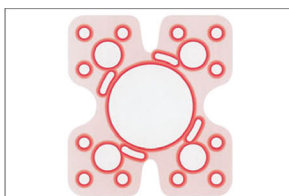
Resolution: 4800 dpi x 9600 dpi
Scan with USB 2.0 Hi-Speed.

Calibration Sheet



The calibration sheet limits scanner-read errors to a fixed range.

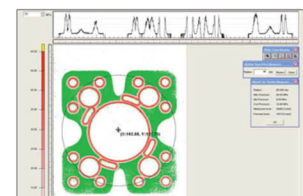
► How to use



Prepare the colored Prescale.



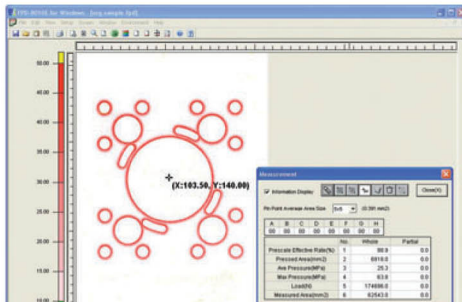
Scan Prescale Samples.



Perform analysis utilizing FPD-8010E Software.

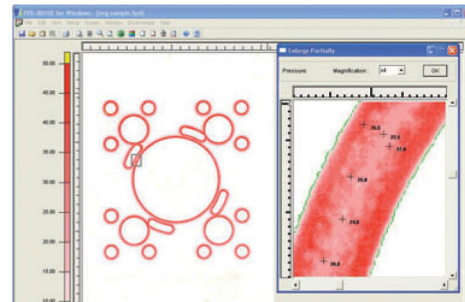
Software Functions

Overall Measurement



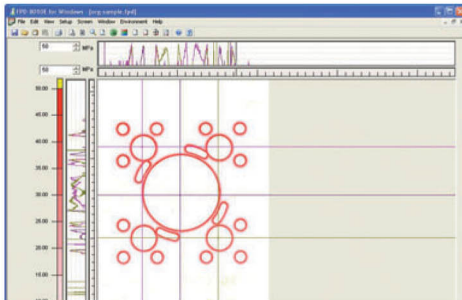
Various data such as average pressure and minimum pressure are displayed.

Partial Enlargement



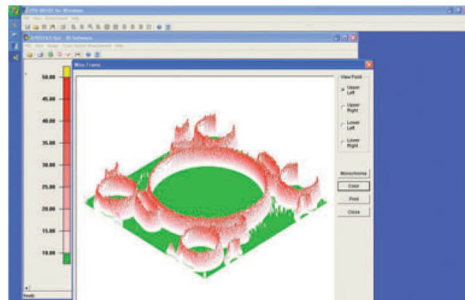
The specified field is enlarged. (X 4, X 8, X 16)

Pressure Cross Section



Pressure distribution on a line passing through a specified point is shown on a line graph.

Wire Frame



Pressure is displayed in 3-D format.

Text Data Output

Pressure data is exported to a text file.

Pressure Distribution Animation

Step-by-step pressure values are displayed in animated format.

Specifications

Product Name	FUJIFILM PRESSURE DISTRIBUTION MAPPING SYSTEM for PRESCALE
Version	FPD-8010E
Main Funktion	Prescale image input function Pressure distribution display function / pressure data output function 3D display function / polar coordinate display function
Scan Sizes	Single Read: 297mm x 210mm (11.7 in x 41.3 in) Maximum: 891mm x 1050mm (35.1 in x 41.3 in)
Resolution	0.125 (200 dpi), 0.25 (100 dpi), 0.5, 1, 2mm sq.
Fault Tolerance	+/- 10% of measuring result
Packed Items	Dedicated software, dedicated cover, calibration sheet, installation manual, software license, Epson Perfection Scanner

Recommended Software Environment:

OS	Windows® 2000 Professional SP4 Windows® XP Home Edition Windows® XP / Professional SP2 Windows Vista™ Business Windows Vista™ Home Premium
CPU	Pentium® III 1GHZ or higher
Memory	512 MB or higher
Display	XGA or better, 65,000 colors or more

Please find further information: www.prescale.eu / www.fujifilm.eu

FUJIFILM

FUJIFILM Europe GmbH

HEESENSTR. 31 | D-40549 DÜSSELDORF,
TEL.: +49 0211 - 50 89 -515, FAX: +49 0211 - 50 89-240
INDUSTRIAL PRODUCTS DIVISION
prescale@fujifilm.de, www.prescale.eu